

WERK 2

THE VENUE



WERK 2 is a modern event location with the charme of a 19th century industrial factory. Its adaptability makes the former factory hall ideal for your special event, incentive, fair, roadshow, exhibition or sales presentation.

You have requests or ideas? It is our pleasure to implement them with you.



WERK 2



HALLE A



The large hall "Halle A" offers enough space for any kind of event. The shapeable hall with its architecture and its short loading distances is ideal for events, conventions, seminars, exhibitions and business events. The special flair and the spacious size allow an abundance of room arrangement and a variety of decoration. A historic engine lathe and two underslung cranes, one of them fully functional, are living prove of the eventful past of the factory.

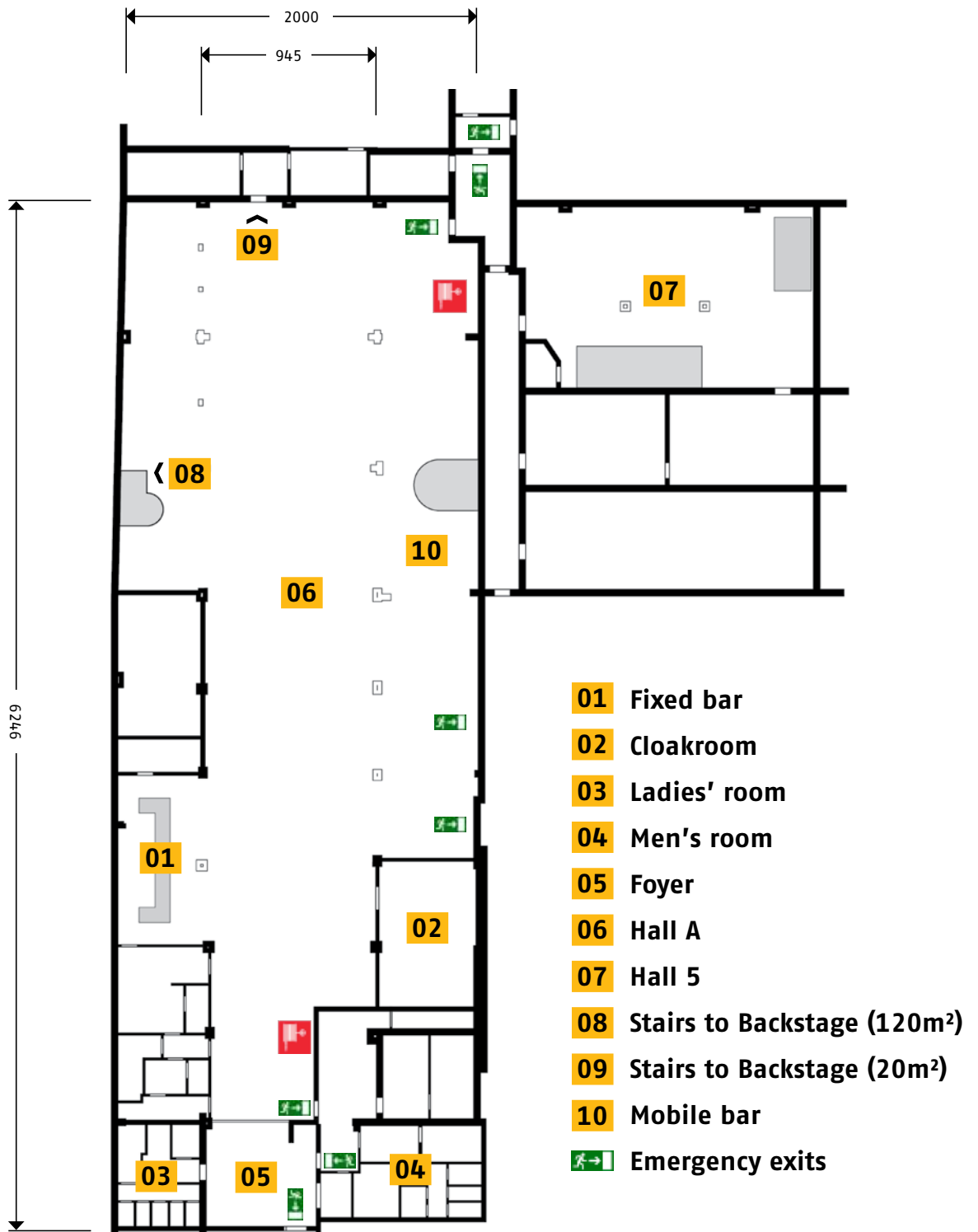
Technical details

- Room size: 900 m²
- Room height: 11 m
- Room width: 20 m
- Room length: 63 m
- Headroom: 9,50 m
- Pillar size: 9 m
- No daylight
- Electricity supply: 180 A
- Soundproofing existing, emission max. 105 dB
- Catering/Backstage: 120 m² and 20m²
- Production office: 22 m² (WiFi on demand)
- Underfloor heating
- Size of the doors: roller door 3,80 m x 4,00 m, others 2,25 m x 2,25 m
- Transferable stage
- 1 fixed bar, 1 mobile bar



Capacities

- Up to 500 seating theatre-style
- Up to 300 banquet
- Up to 300 parliamentary seating
- Up to 800 reception





WERK 2



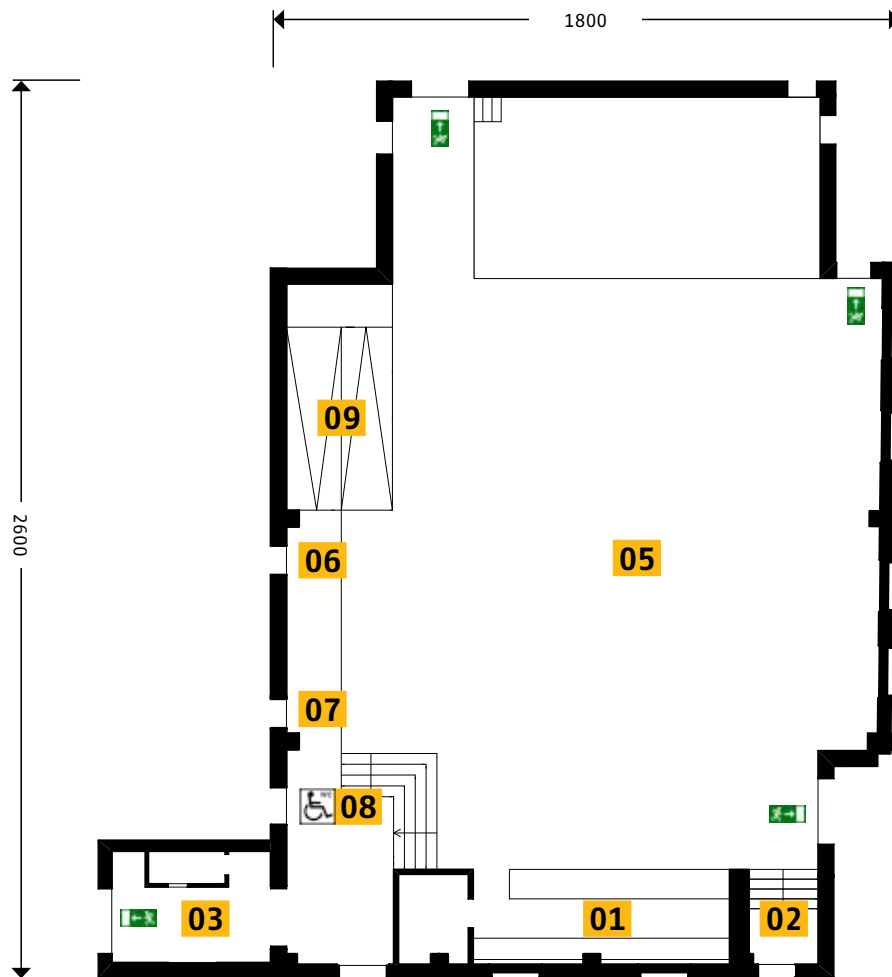
HALLE D




On the 300 m² of event space concepts can be implemented for small events of all kinds. The accessibility features of the 2010 newly renovated hall D and the successful combination of modern elements and historical construction, gives you the freedom to realize all kinds of festivities.

Capacities

- Up to 250 seating theatre-style
- Up to 120 banquet
- Up to 370 reception



- 01** Bar
- 02** Cloakroom
- 03** Entrance / cash desk
- 04** Stage
- 05** Audience area
- 06** Ladies' room
- 07** Men's room
- 08** Barrier-free toilet
- 09** Wheelchair ramp
-  Emergency exits

Technische Details

- Room size: 400 m², Action Area: 350m²
- Room height: 4,10 m to 5,58 m
- Room width: 18 m
- Room length: 26 m
- Fixed stage (9 x 5 m)
- No daylight
- Electricity supply: 180 A
- Soundproofing existing
- 3 Backstagerooms, 1 kitchen, 2 bathrooms
- Delivery on the ground floor via the open space next to the hall

WERK 2

OPEN AIR AREA

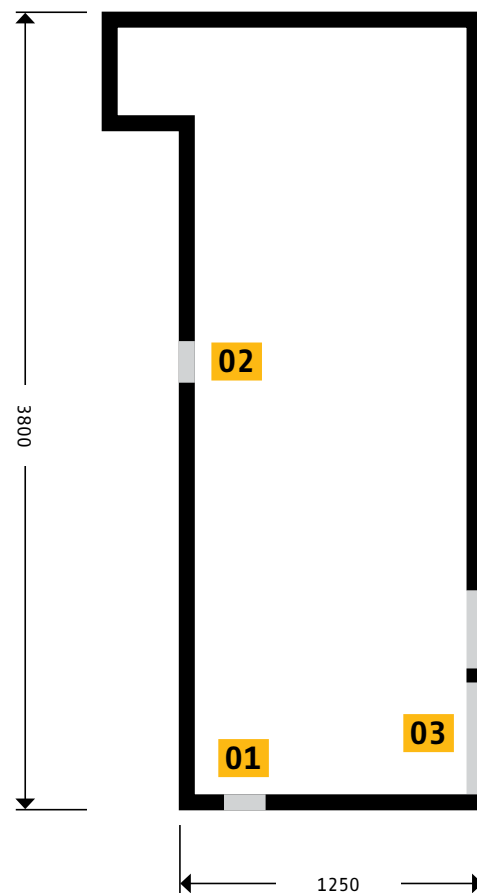


- 01** Access Halle D
- 02** Access Halle A
- 03** Access Kochstraße

Directly behind the halls A and D an open area for delivery and parking is located. The open space can be used as an individually usable event space for open-air events or serve as a connection between the two halls. The open space can be used for events until 10 pm.

Technical details

- Size: 38 m x 12,5 m
- Supply of electricity possible
- Paved
- Lockable





WERK 2



SERVICES



Catering

Our long-term catering partners convince through excellent modern cuisine ranging from traditional to Mediterranean. They provide individual event catering, appetizers, hearty game specialties or international buffet. Our catering partners are happy to submit an offer to you.

Decoration

At your request and in cooperation with our local partners we will gladly provide you with a special decoration theme to suit your event.

Booking

We will be delighted to organize social and cultural activities at your events as requested. We can support with contacts to bands, artists, presenters, DJs and many more.

Furniture

We have furniture (bar stools, bistro tables and chairs) we will provide for your event. Besides, it is also possible to equip your event customized with the help of our partners.



Documentation

We would be happy to help you with your event (event recordings, live broadcasts, documentaries, image films) and put you in contact with our partner „Lumalenscape“.

Further

For your event we can also offer the following services:

- Security
- Technicians
- Construction helpers
- Hostesses
- Lavatory attendant



Events, congresses, presentations

Kabel Deutschland/Vodafone
BMW
Kabel Deutschland/Vodafone
BMW
Stadtwerke Leipzig GmbH
EEX European Energy Exchange AG
Schwarzkopf
TW AUDIO GmbH
Neuroscience Center Leipzig
Wirtschaftsjunioren
Henkel AG & Co. KG aA

Concerts

Archive
Calexico
Helmet
Milky Chance
Monster Magnet
Patti Smith
Rainbirds
Royal Republic
Samy Deluxe
Seeed
Subway To Sally
The Kooks
Yann Tiersen

Further

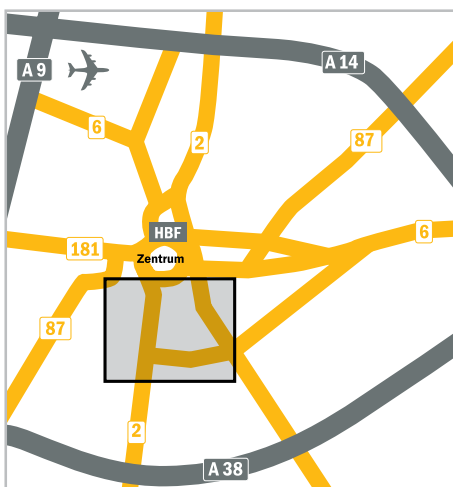
Leipziger Tanztheater
Readings: T.C. Boyle, Nagel, Juli Zeh
U.F.O. Film-Festival
Kunst- und Kulturfestival City Crash
Beatz im Block Festival



WERK 2



DRIVING DIRECTIONS



Distances from WERK 2

- Main Railway Station: 5 km
- Center: approx. 3 km
- Airport: about 20 km
- Fair: approx. 12 km
- A 38: approx. 4 km
- A 9: about 8 km
- A 14: approx. 13 km

No public parking

- large public parking at the Battle of the Nations Monument: approx. 3 km
- very good connections to public transport



WERK 2



CONTACT

WERK 2

WERK 2 – Kulturfabrik Leipzig e.V.
Kochstr. 132
D-04277 Leipzig
www.werk-2.de

Eventmanagment:

Nina Mutzbauer
Holger Klose
event@werk-2.de
Fon: 0341 3080115
Fax: 0341 3080144

Management:

Katrin Gruel

Chairmen:

Jürgen Ackermann (chairman)
Nina Laube (representative chairman)
Susann Schreiber

